



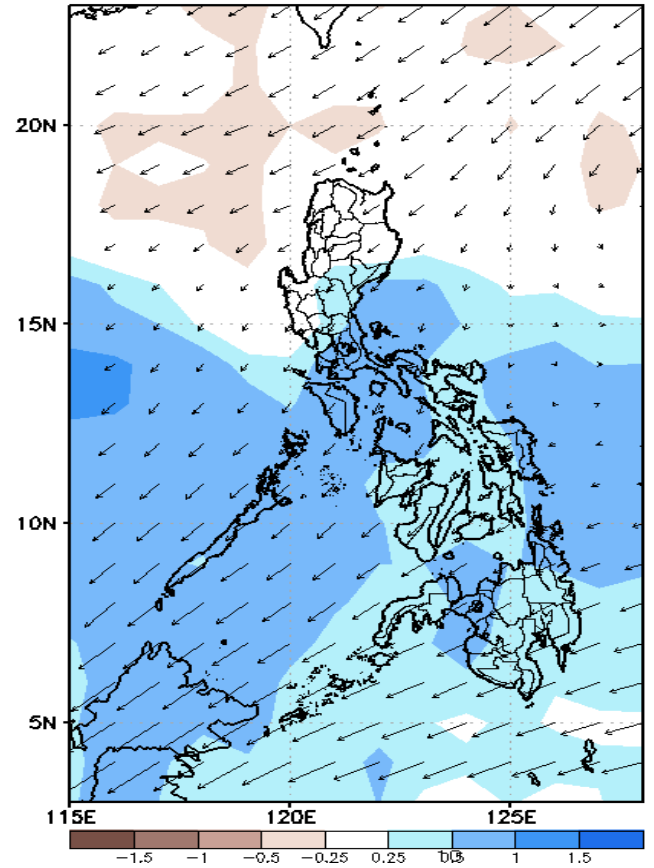
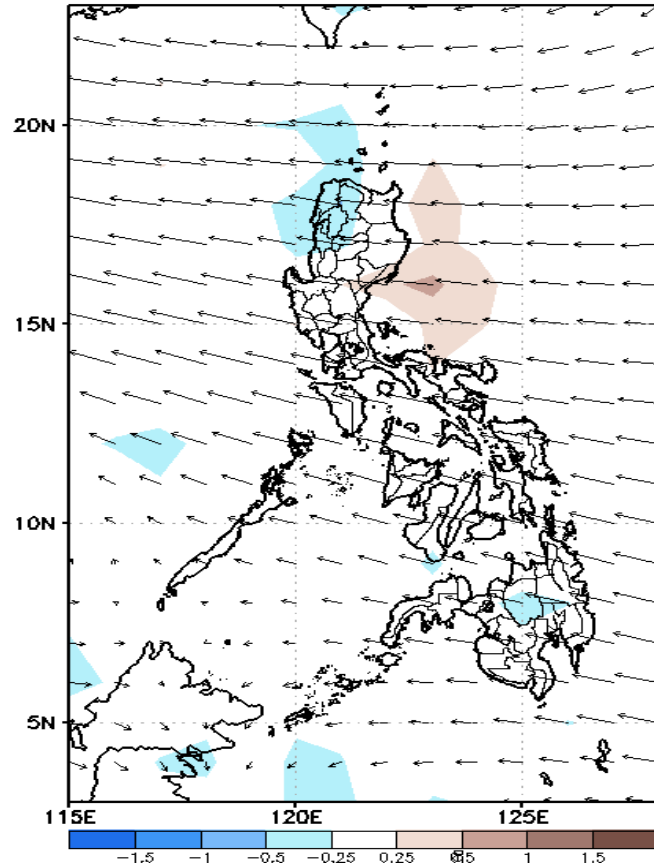
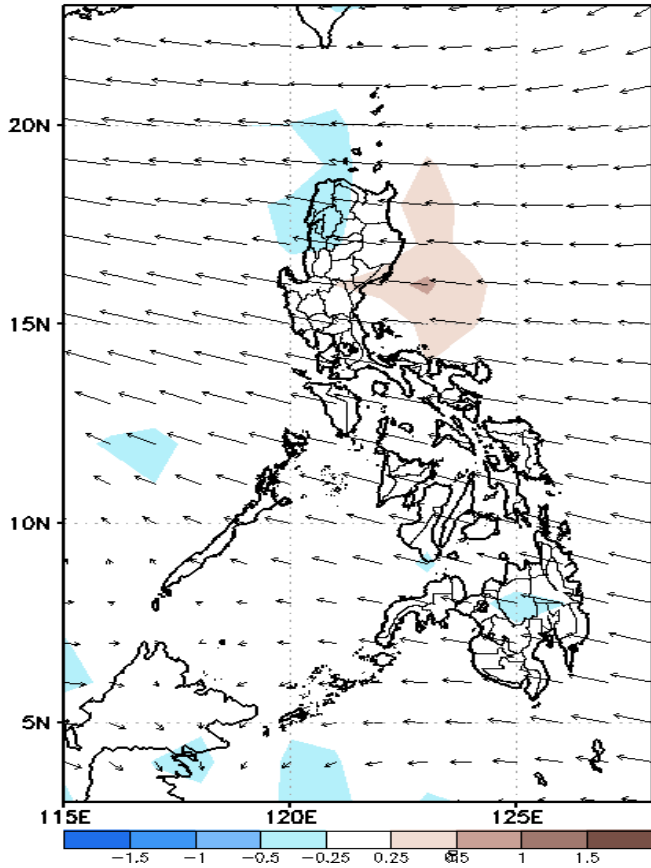
# Week 1 & Week 2 Forecast for the Philippines using GEFS Model



# GEFS Week-1 Forecasts: Divergence & Wind Anomaly

Week 1: Sep 20-26, 2021

GEFS Week-1 850-hPa Divergence and Wind Anom Valid: 20210920 - 20210926  
GEFS Week-1 700-hPa Divergence and Wind Anom Valid: 20210920 - 20210926  
GEFS Week-1 200-hPa Divergence and Wind Anom Valid: 20210920 - 20210926

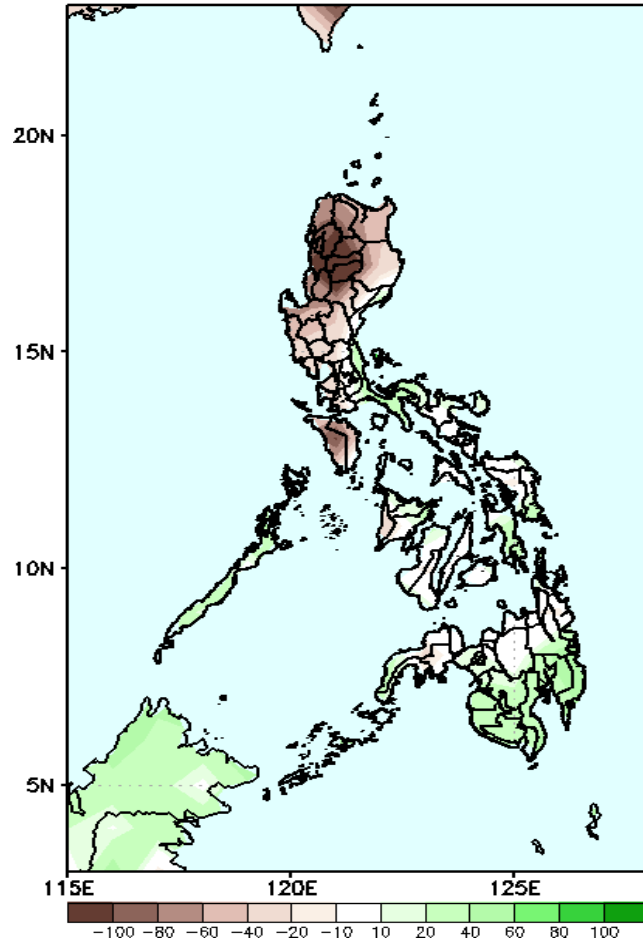


Upper and low level Divergence suggest likelihood of precipitation in most parts of Southern Luzon, Visayas and Mindanao. Southwest monsoon affecting Palawan and parts of Western Visayas. Easterlies affecting most parts of the country attributing to light and moderate rains due to thunderstorms during the forecast.

# Precipitation Anomaly and Exceedance Probability > 25/50 mm

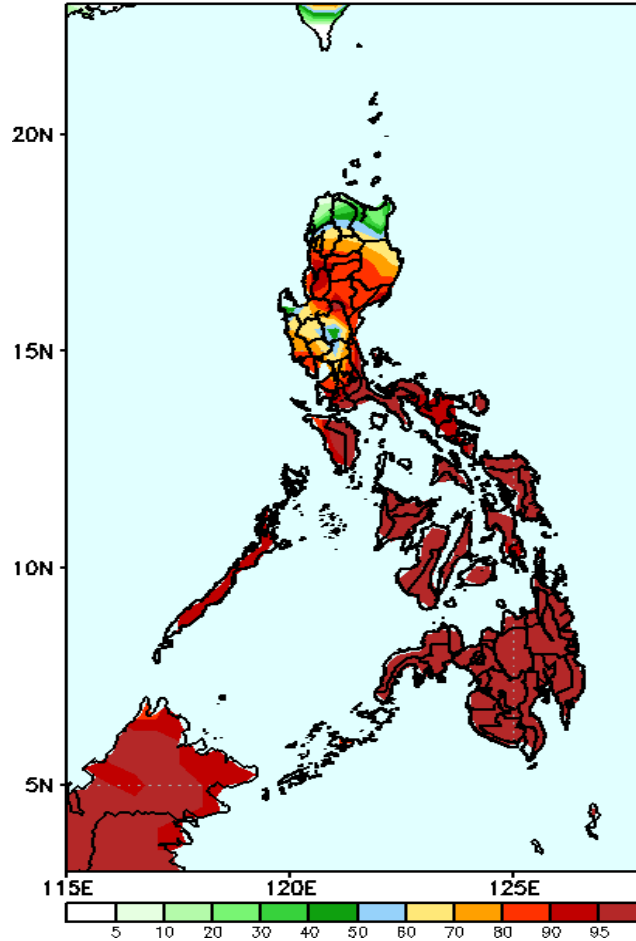
## Week 1: Sep 20-26, 2021

GEFS Week-1 Precip Anomaly  
Valid: 20210920 - 20210926



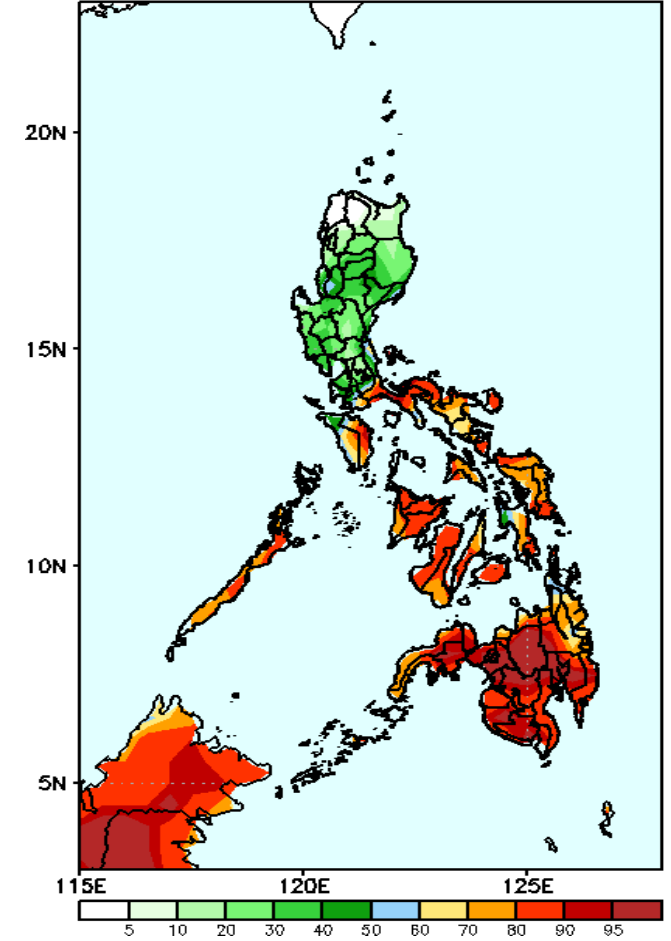
Rainfall deficit of 50-100mm is expected in Luzon while 40-70mm increase of rainfall in in southern Mindanao during the forecast period.

GEFS Week-1 Exceedance Prob. > 25mm  
Valid: 20210920 - 20210926



High probability of rainfall to exceed 25mm in most parts of the country during the forecast period.

GEFS Week-1 Exceedance Prob. > 50mm  
Valid: 20210920 - 20210926

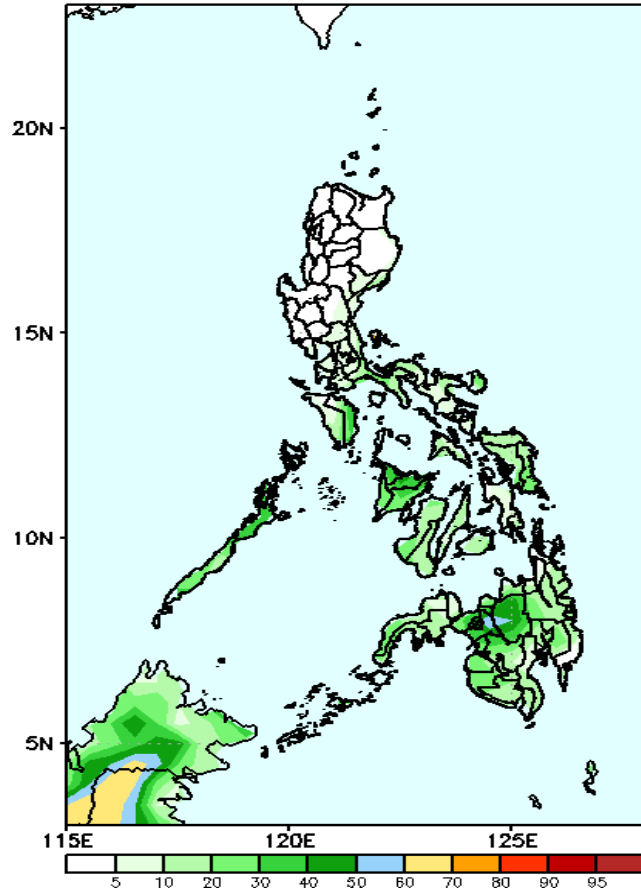


High probability of rainfall to exceed 50mm in most parts of Southern Luzon, MIMAROPA, Visayas and Mindanao during the forecast period.

# Exceedance Probability > 100/150/200 mm

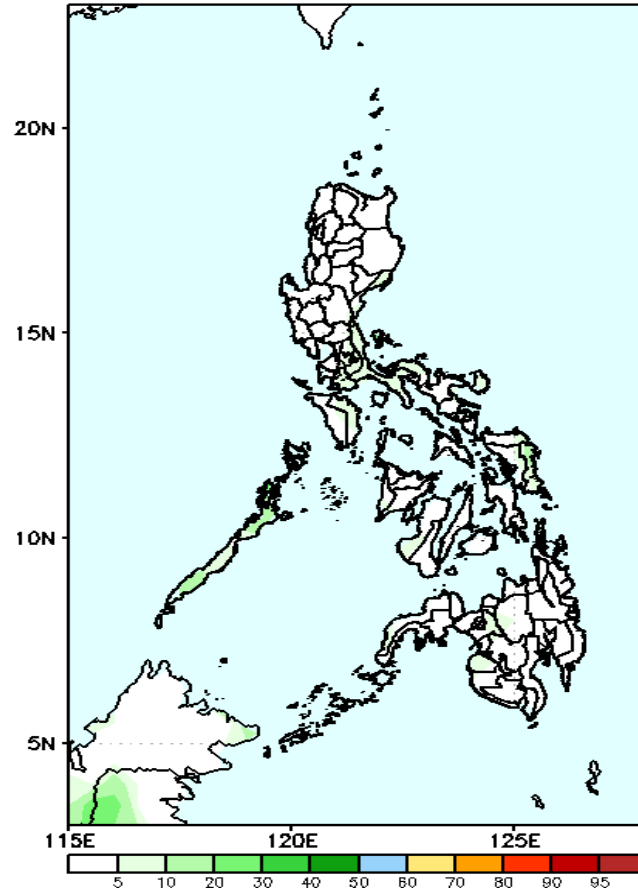
## Week 1: Sep 20-26, 2021

GEFS Week-1 Exceedance Prob. > 100mm  
Valid: 20210920 - 20210926



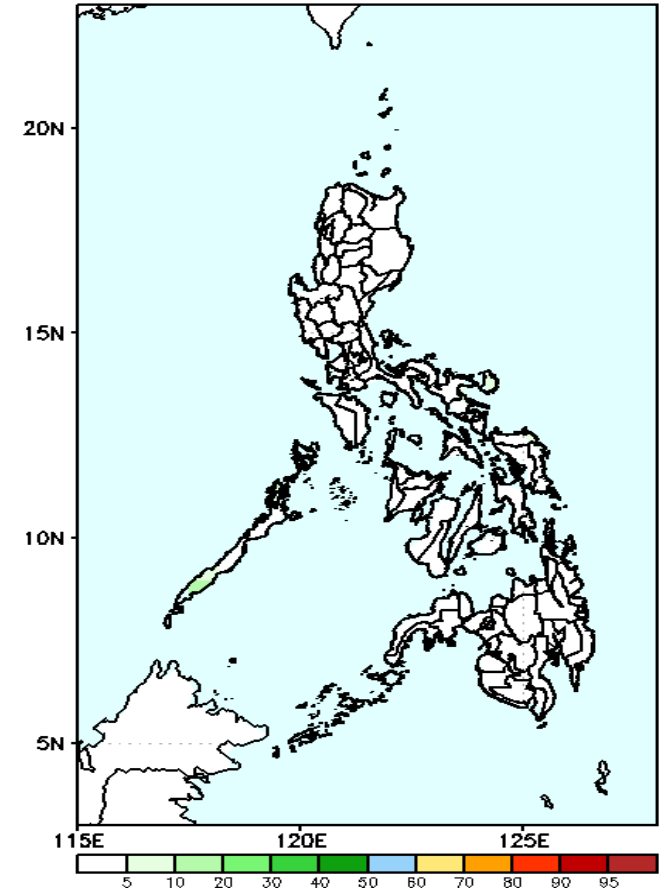
Less probability of rainfall to exceed 100mm in most parts of the country is expected during the forecast period.

GEFS Week-1 Exceedance Prob. > 150mm  
Valid: 20210920 - 20210926



Less probability of rainfall to exceed 150mm in most parts of the country is expected during the forecast period.

GEFS Week-1 Exceedance Prob. > 200mm  
Valid: 20210920 - 20210926



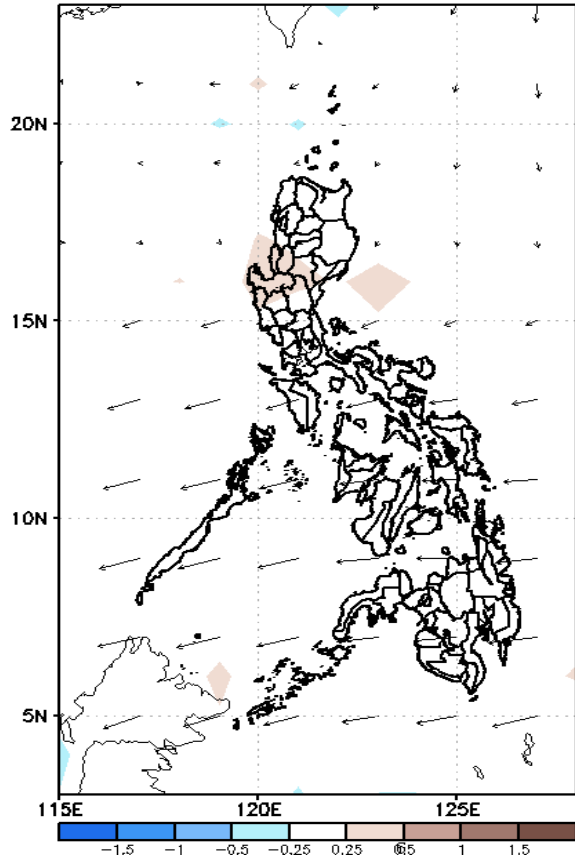
Less probability of rainfall to exceed 200mm in most parts of the country is expected during the forecast period.



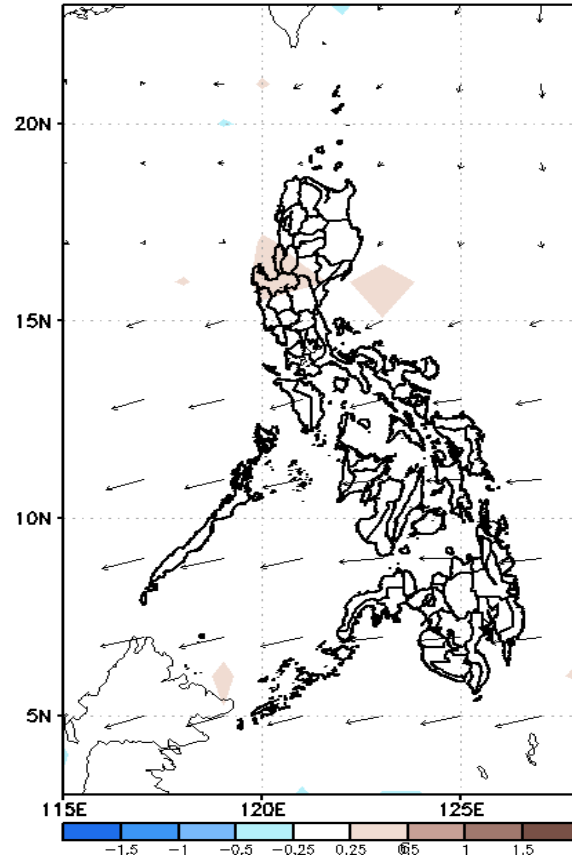
# GEFS Week-2 Forecasts: Divergence & Wind Anomaly

## Week 2: Sep 27- Oct 03, 2021

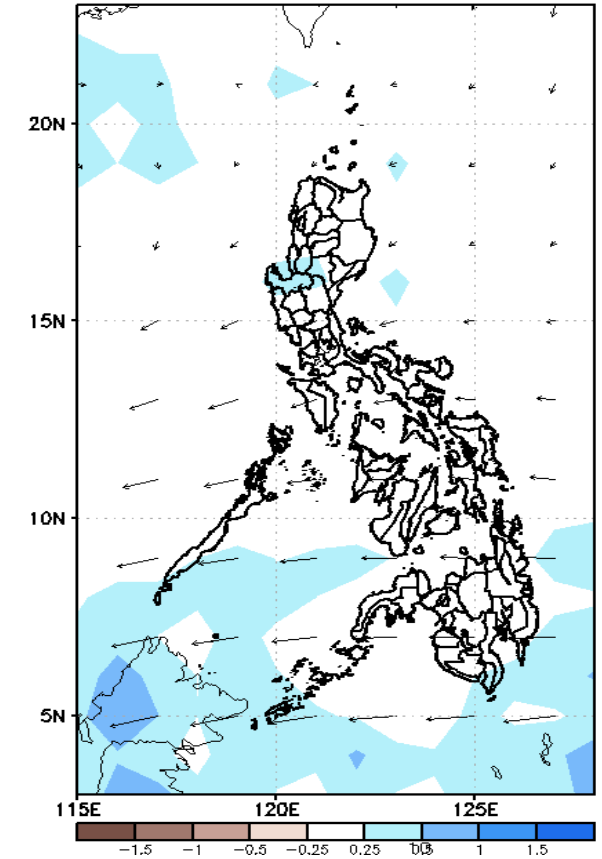
GEFS Week-2 850-hPa Divergence and Wind Anomaly  
Valid: 20210927 - 20211003



GEFS Week-2 700-hPa Divergence and Wind Anomaly  
Valid: 20210927 - 20211003



GEFS week-2 200-hPa Divergence and Wind Anomaly  
Valid: 20210927 - 20211003

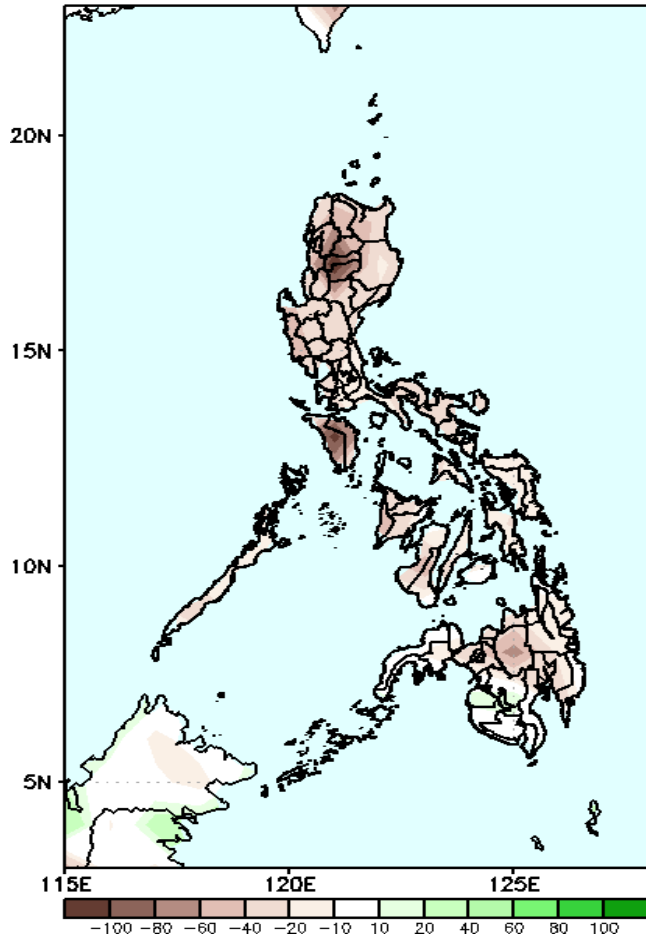


Upper and low level Divergence suggest low likelihood of precipitation in most parts of the country. Easterlies affecting most parts of the country attributing to light and moderate rains due to thunderstorms during the forecast.

# Precipitation Anomaly and Exceedance Probability > 25/50 mm

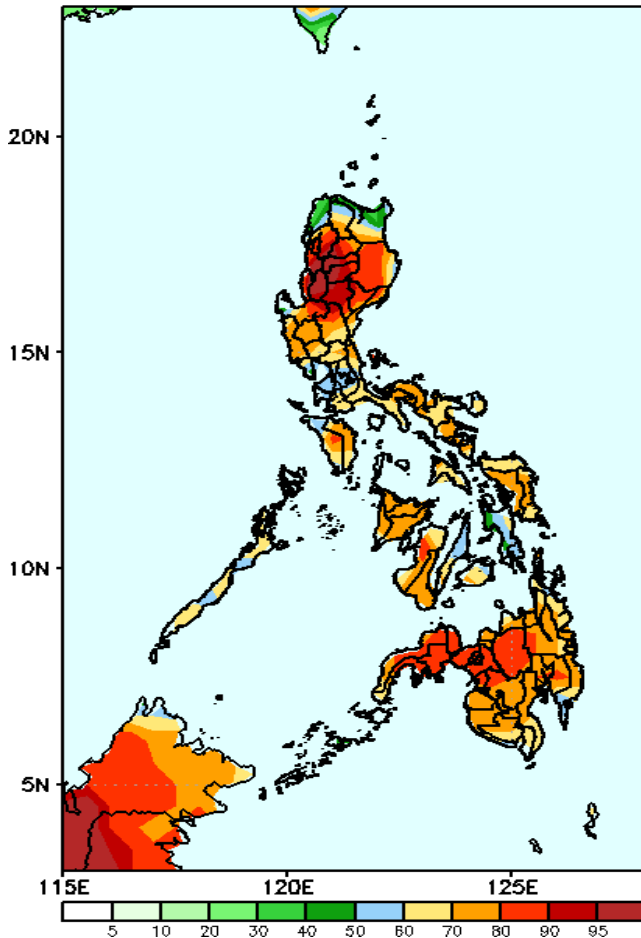
## Week 2: Sep 27- Oct 03, 2021

GEFS Week-2 Precip Anomaly  
Valid: 20210927 - 20211003



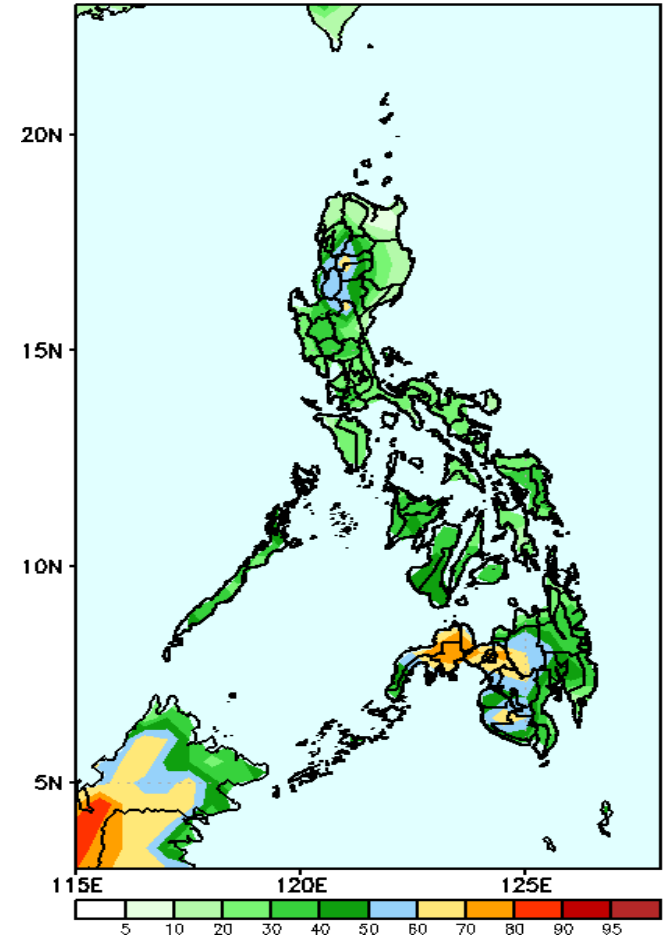
Rainfall deficit of 40-100mm is expected in most parts of the country during the forecast period.

GEFS Week-2 Exceedance Prob. > 25mm  
Valid: 20210927 - 20211003



High probability of rainfall to exceed 25mm in most parts of the country during the forecast period

GEFS Week-2 Exceedance Prob. > 50mm  
Valid: 20210927 - 20211003



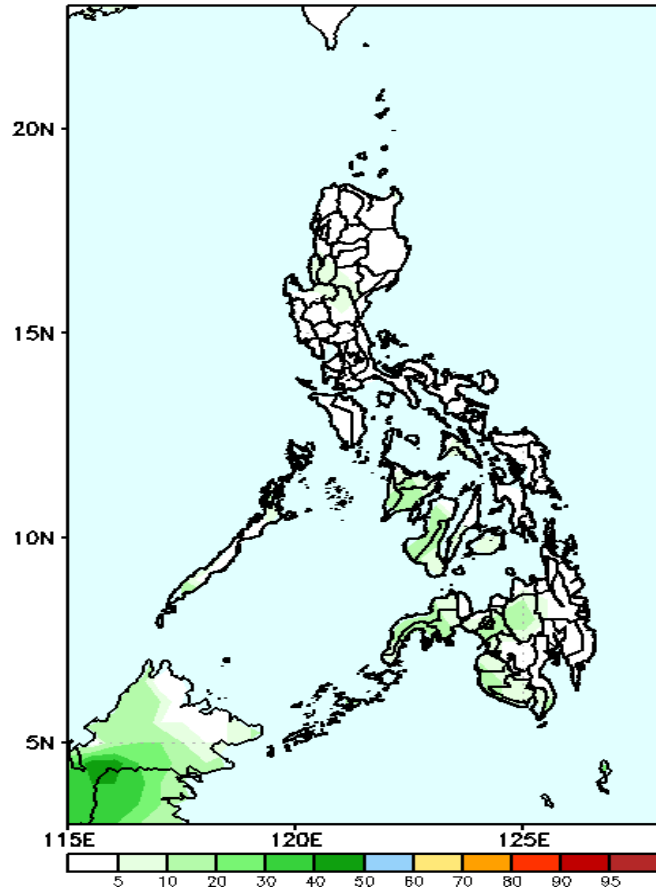
Low probability of rainfall to exceed 50mm in most parts of the country except in Lanao provinces and most parts of Zamboanga Peninsula where 50 mm of rainfall is most likely during the forecast period.



# Exceedance Probability > 100/150/200 mm

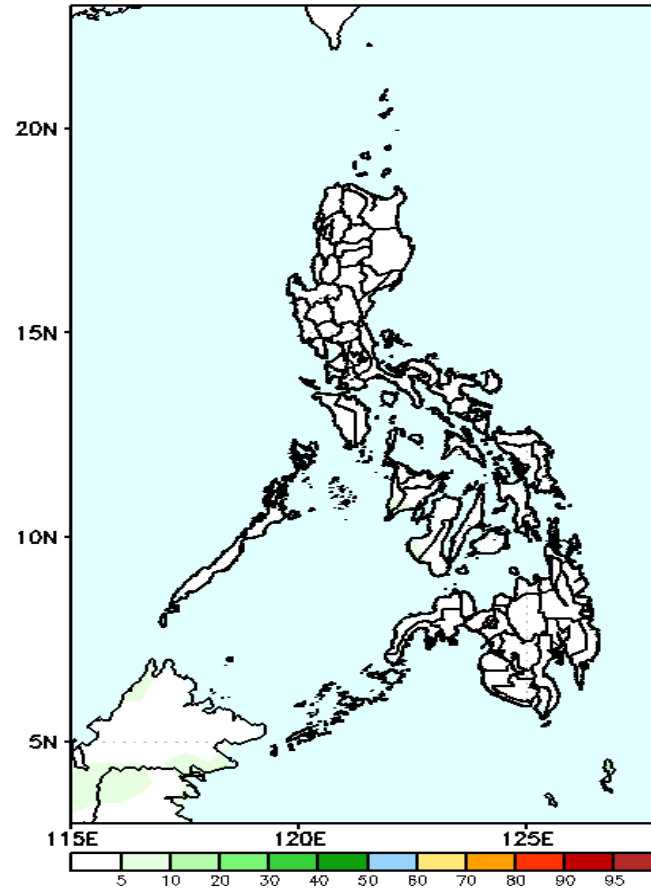
## Week 2: Sep 27- Oct 03, 2021

GEFS Week-2 Exceedance Prob. > 100mm  
Valid: 20210927 - 20211003



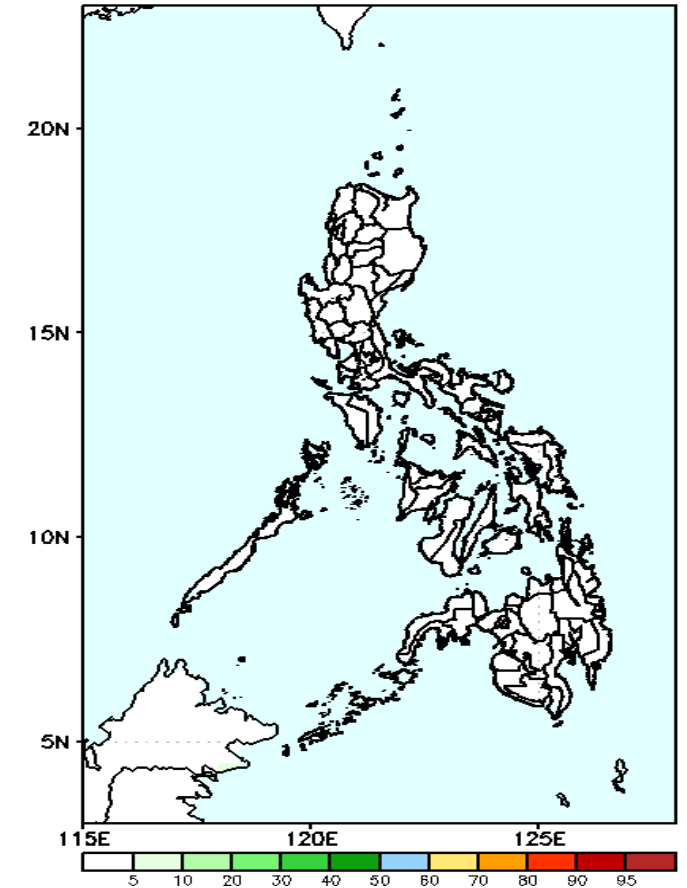
Less probability of rainfall to exceed 100mm in most parts of the country is expected during the forecast period.

GEFS Week-2 Exceedance Prob. > 150mm  
Valid: 20210927 - 20211003



Less probability of rainfall to exceed 150mm in most parts of the country is expected during the forecast period.

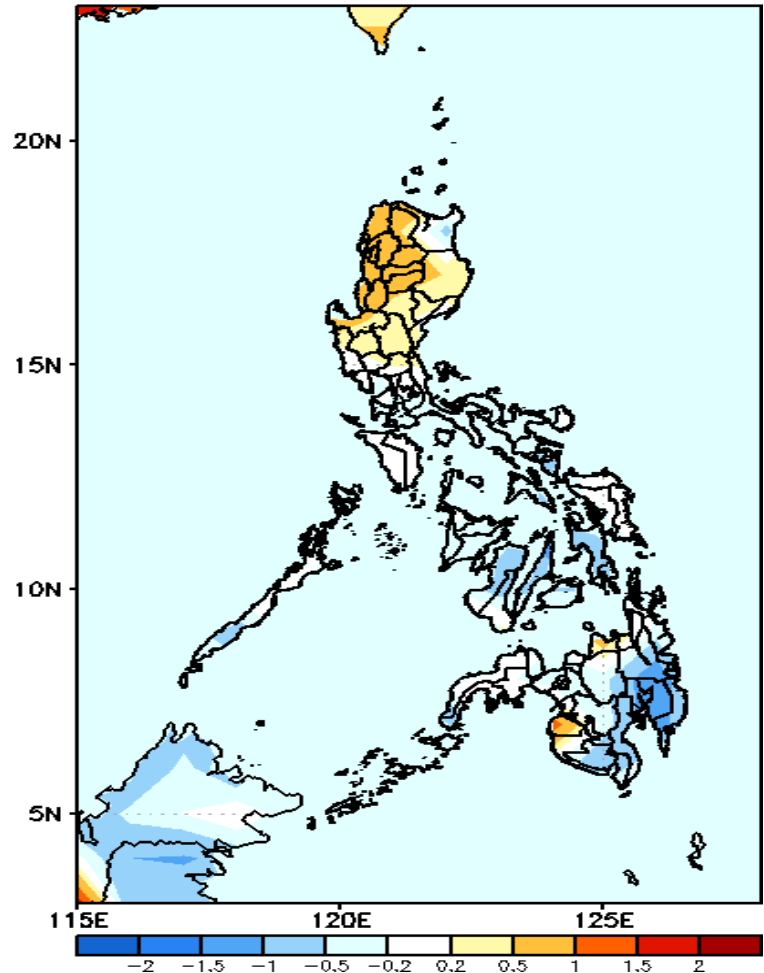
GEFS Week-2 Exceedance Prob. > 200mm  
Valid: 20210927 - 20211003



Less probability of rainfall to exceed 200mm in most parts of the country is expected during the forecast period.

# GEFS Week-1 & 2 Forecasts: T2m Anomaly

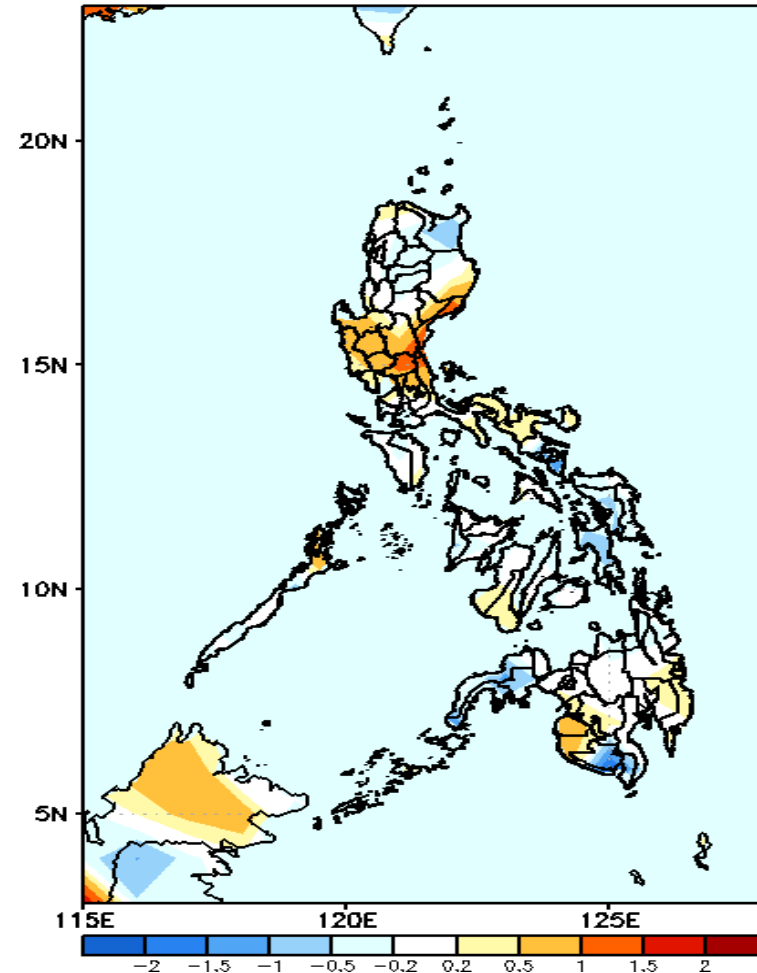
GEFS Week-1 T2m Anomaly  
Valid: 20210920 - 20210926



**2m Temperature Week 1: Sep 20-26, 2021**

Slightly warmer to warmer than average surface air temperature will likely experience in most parts of Luzon while average to slightly cooler in Visayas and cooler than average temperature in eastern and southern parts of Mindanao.

GEFS Week-2 T2m Anomaly  
Valid: 20210927 - 20211003



**2m Temperature Week 2: Sep 27- Oct 03, 2021**

Average to slightly cooler than average surface air temperature will likely experience in most parts of the country except in Central Luzon, Maguindanao and Sultan Kudarat where slightly warmer to warmer temperature is expected.